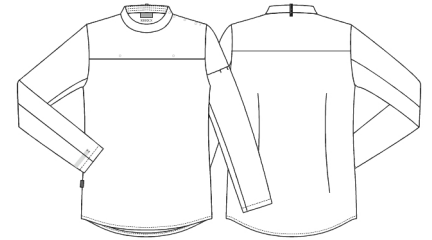


Date: 11-03-2024

25235-1959-0-0-720

Men's popover shirt

KENTAUR[®]
Work Wear of Denmark



- Added interlining which can be washed and dried according to ISO 15797
- Shoulder closure with hidden press buttons
- Hidden press buttons for Snap-On apron
- Pen pocket on left sleeve
- Collar strap for bib apron
- Long sleeves with pull-up function

Quality: 60/40% CO/PES, 109 g/m²

Colour: clay grey 720

Construction: Plain

Size: XS-4XL



Washing instructions

Can be washed according to ISO15797. The garments should always be washed before use. Wash before use, by recommended temperature. Colour loss can occur with the use of disinfectants.

To avoid creases the machine should not be filled more than 2/3.

Measurement tolerance +/- 1 cm. Expected measurements after approx. 3 times wash. All measurements are in cm.

		XS	S	M	L	XL	2XL	3XL	4XL
Chest width	A	97	105	113	121	129	137	145	155
Bottom width	C	99,5	107,5	115,5	123,5	131,5	139,5	147,5	157,5
Back length	E	75	76	77	78	79	80	81	82
Sleeve length	F	60,8	61,4	62	62,6	63,2	63,8	64,4	65