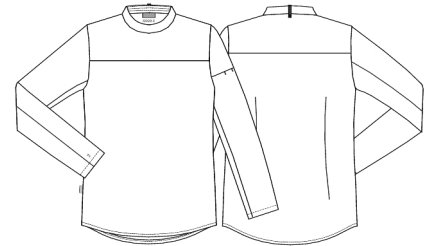


Men's popover shirt



- Simple and light design
- Added interlining which can be washed and dried according to ISO 15797
- Stand up collar
- Shoulder closure with hidden press buttons
- Hidden press buttons for snap-on apron
- Pen pocket on left sleeve
- Collar strap for bib apron
- Dart on the back
- Long sleeves with pull-up function
- MADE IN GREEN
- VAT dyed

Quality: 65/35% PES/CO, 150 g/m2
Colour: white 103
Construction: Plain
Size: XS-4XL



Washing instructions

Can be washed according to ISO15797. The garments should always be washed before use. Wash before use, by recommended temperature.

To avoid creases the machine should not be filled more than 2/3. Pressbuttons should be open.

Measurement tolerance +/- 1 cm. All measurements are in cm. Expected measurements after approx. 3 times wash.

		XS	S	M	L	XL	2XL	3XL	4XL
Chest width	A	97	105	113	121	129	137	145	155
Bottom width	C	99,5	107,5	115,5	123,5	131,5	139,5	147,5	157,5
Back length	E	75	76	77	78	79	80	81	82
Sleeve length	F	60,8	61,4	62	62,6	63,2	63,8	64,4	65