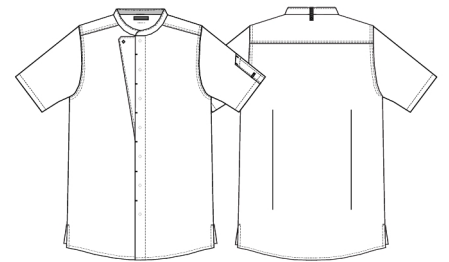


23516-143-0-0-531

**Chef/service jacket s/s**



- Responsible Choice
- Recycled polyester from PET bottles in quality 105 and 143
- Natural stretch quality 143 - equal to 4% stretch
- Smart design - improved fit
- A mixture of classic chef jacket and a modern chef shirt
- Stand up collar
- Collar strap for bib apron
- Front with bartacks for easy access to press buttons
- Hidden press buttons
- One visible press button at the top
- Short sleeves
- Divided pen pocket on left sleeve
- Dart on the back
- Side slits

**Quality:** 50/50% CO/rPES, 175 g/m2  
**Colour:** cypres olive 531  
**Construction:** 2X1 Twill  
**Size:** XS-4XL



**Washing instructions**

Colour loss can occur with the use of disinfectants. Can be washed according to ISO15797. The garments should always be washed before use. Wash before use, by recommended temperature.

To avoid creases the machine should not be filled more than 2/3. Pressbuttons should be open.

Measurement tolerance +/- 1 cm. All measurements are in cm. Expected measurements after approx. 3 times wash.

|               |   | XS   | S    | M    | L    | XL   | 2XL  | 3XL  | 4XL  |
|---------------|---|------|------|------|------|------|------|------|------|
| Chest         | A | 94   | 102  | 110  | 118  | 126  | 134  | 142  | 150  |
| Waist         | B | 87   | 95   | 103  | 111  | 119  | 127  | 135  | 143  |
| Bottom        | C | 91   | 99   | 107  | 115  | 123  | 131  | 139  | 147  |
| Backlength    | E | 74   | 75   | 76   | 77   | 78   | 79   | 80   | 81   |
| Sleeve length | F | 25,7 | 26,1 | 26,5 | 26,9 | 27,3 | 27,7 | 28,1 | 28,5 |