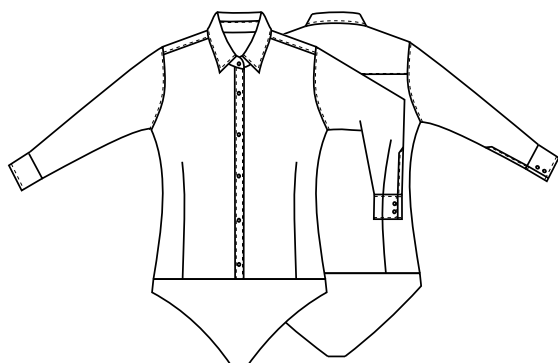


77 cm



DETTAGLI

- Collo classico
- Slip in microfibra con bottoni a pressione

TAGLIE

XS ÷ XXL
Slim Fit

COLORE

00 Bianco

TESSUTO

97% cotone
3% spandex
96 g / m²



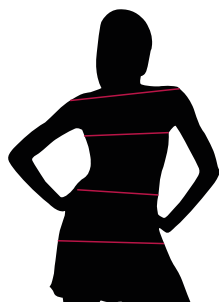
Le misure indicate si riferiscono alle taglie **S** per i capi femminili, **L** per i capi maschili. Per i capi a taglia unica le misure indicate sono effettive.

COLORI DISPONIBILI



00 Bianco

TABELLE TAGLIE
E CORRISPONDENZE

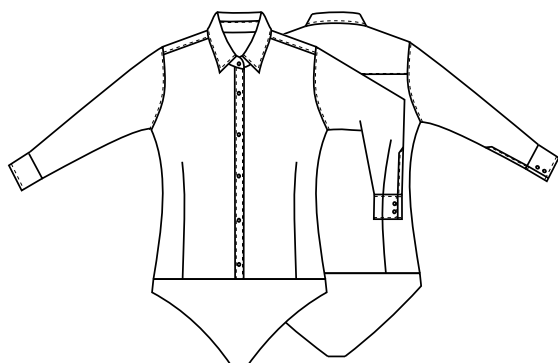


1
2
3
4

| TABELLA ST-N4 SLIM FIT | | | | | | | |
|--------------------------|-------|-------|-------|--------|---------|---------|---------|
| TAGLIA | XS | S | M | L | XL | XXL | 3XL |
| 1 - SPALLE | | | | | | | |
| 2 - CIRCONFERENZA TORACE | 84-88 | 89-92 | 93-98 | 99-106 | 107-114 | 115-122 | 123-130 |
| 3 - CIRCONFERENZA VITA | 70-74 | 75-78 | 79-85 | 84-93 | 94-102 | 103-112 | 113-121 |
| 4 - CIRCONFERENZA BACINO | | | | | | | |

GUIDA ALLE TAGLIE **1)** Prendere le misure anatomiche (corpo con abbigliamento intimo) senza stringere mantenendo ben teso il metro. **Nota:** nel caso vogliate indossare dei camici già con dell'abbigliamento sotto prendete le misure già abbigliati. **2)** Nel caso tra le misure prese vi fosse una misura a cavallo fra 2 taglie vi consigliamo di prendere quella più grande. **3)** Le misure della tabella sono espresse in centimetri.

77 cm



DETAILS

- Classic collar
- Microfiber slip with press studs

SIZES

XS ÷ XXL
Slim Fit

COLOURS

00 White

FABRIC

97% cotton
3% spandex
96 g / m²



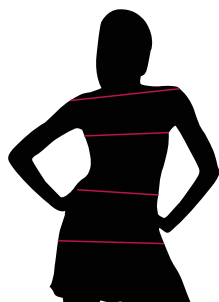
The measures indicated refer to sizes **S** for women, **L** for men. For one-size-fits-all garments, the measurements indicated are effective.

AVAILABLE COLOURS



00 White

SIZE TABLES
AND CORRESPONDENCES



1
2
3
4

| TABLE ST-N4 SLIM FIT | | | | | | | |
|-------------------------|-------|-------|-------|--------|---------|---------|---------|
| SIZE | XS | S | M | L | XL | XXL | 3XL |
| 1 - SHOULDERS | | | | | | | |
| 2 - CHEST CIRCUMFERENCE | 84-88 | 89-92 | 93-98 | 99-106 | 107-114 | 115-122 | 123-130 |
| 3 - WAIST CIRCUMFERENCE | 70-74 | 75-78 | 79-85 | 84-93 | 94-102 | 103-112 | 113-121 |
| 4 - HIPS CIRCUMFERENCE | | | | | | | |

SIZE GUIDE **1)** Take the anatomical measurements (body with underwear) without tightening, keeping the measuring tape taut. Note: in case you want to wear of the gowns already with the clothing underneath take the measurements already dressed. **2)** If there is a measure between 2 sizes between the measurements taken, we advise you to take the bigger one. **3)** The measurements in the table are expressed in centimeters.